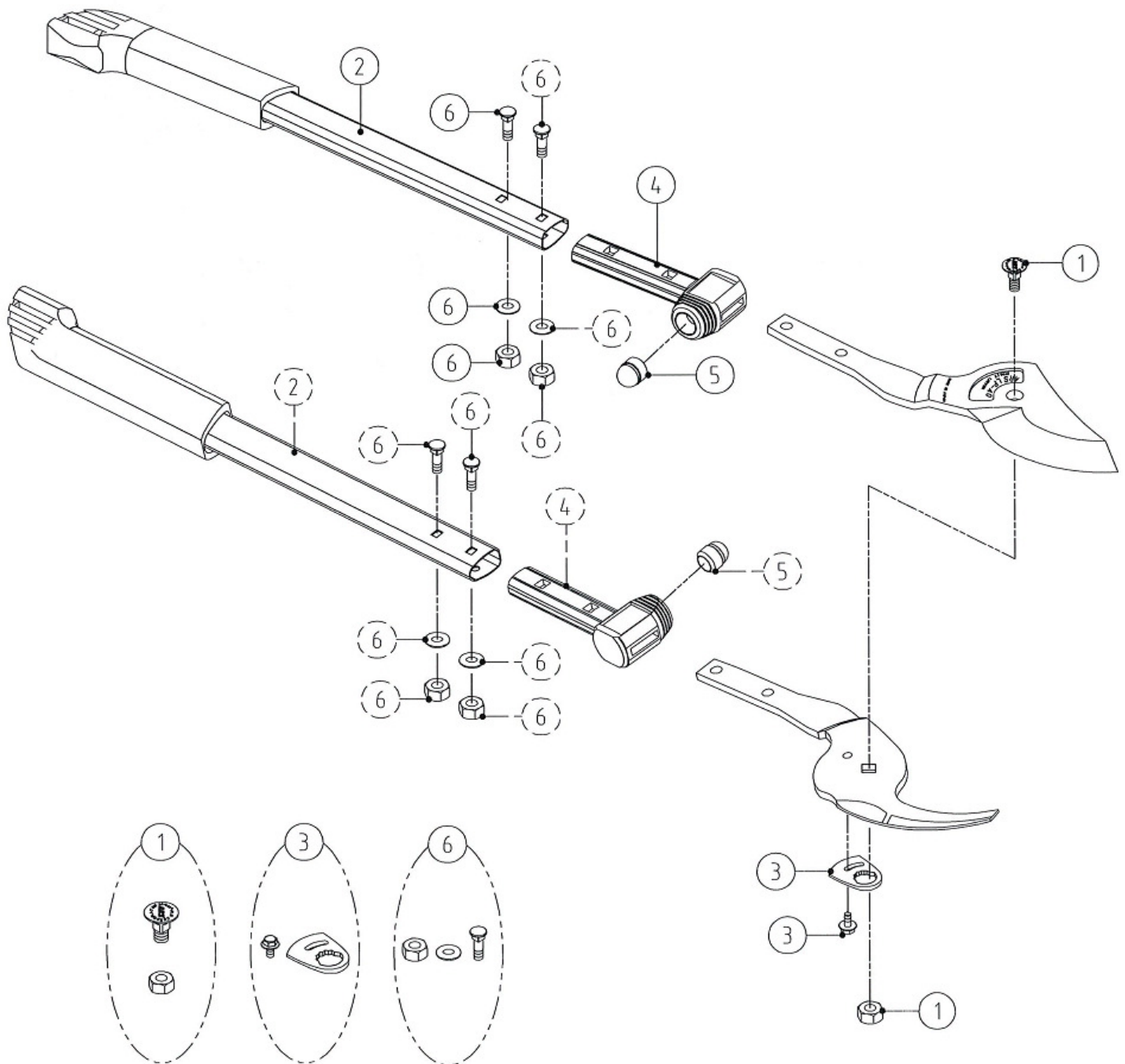


## Parts Diagram for ARLP40 Lopper

Blade:	ARLP401	Replacement Cutting Blade for ARLP40
	ARLP402	Replacement Counter Blade for ARLP40



- |    |         |                                    |
|----|---------|------------------------------------|
| 1. | ARSP278 | Centre Bolt/Nut for ARLP40         |
| 2. | ARSP282 | Handle Pipe for ARLP40             |
| 3. | ARSP245 | Screw Retainer LP Series           |
| 4. | ARSP280 | Bumper Socket For ARLP40           |
| 5. | ARSP250 | Buffer for ARLP40                  |
| 6. |         | Blade holding bolt, washer and nut |

\*Parts in grey not stocked